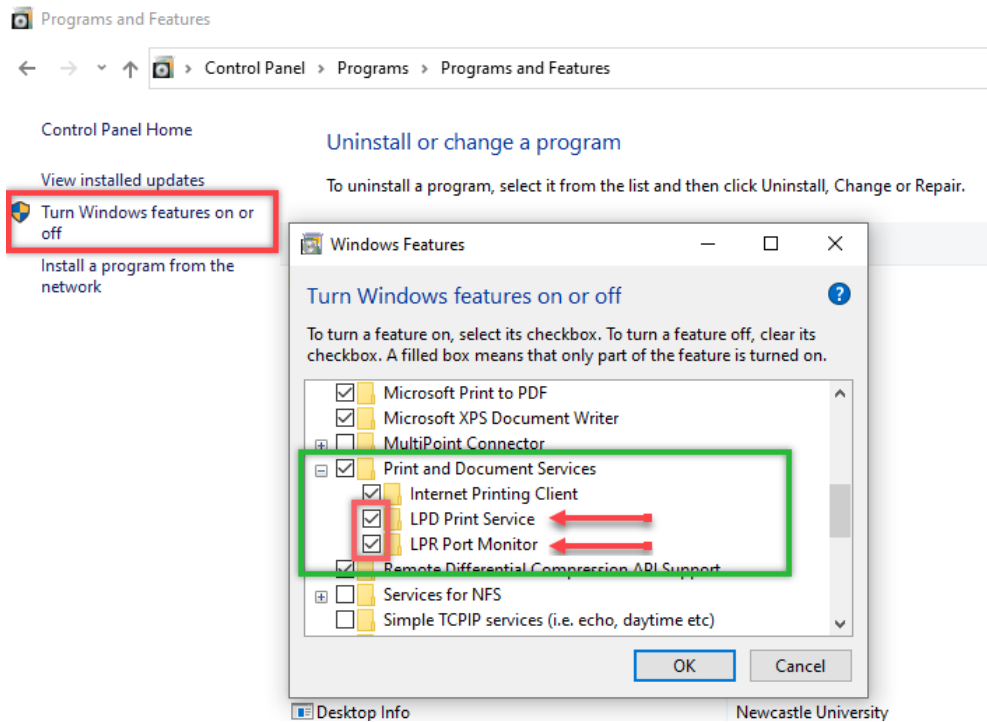
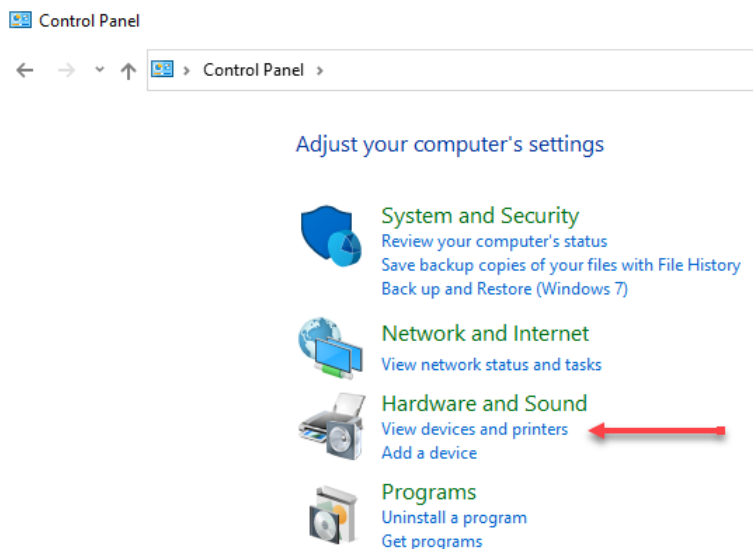


## How to connect to the University Pull Printing System from a unmanaged Windows laptop

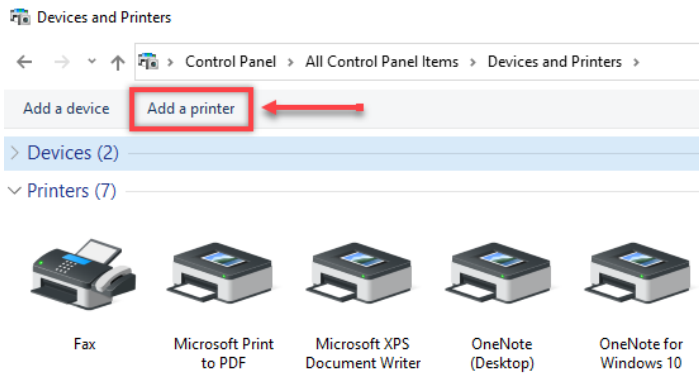
On stand-alone (non-DirectAccess enabled) Windows laptops click the Start button ensure that **LPD** and **LPR** are enabled in Control Panel > Programs and Features:



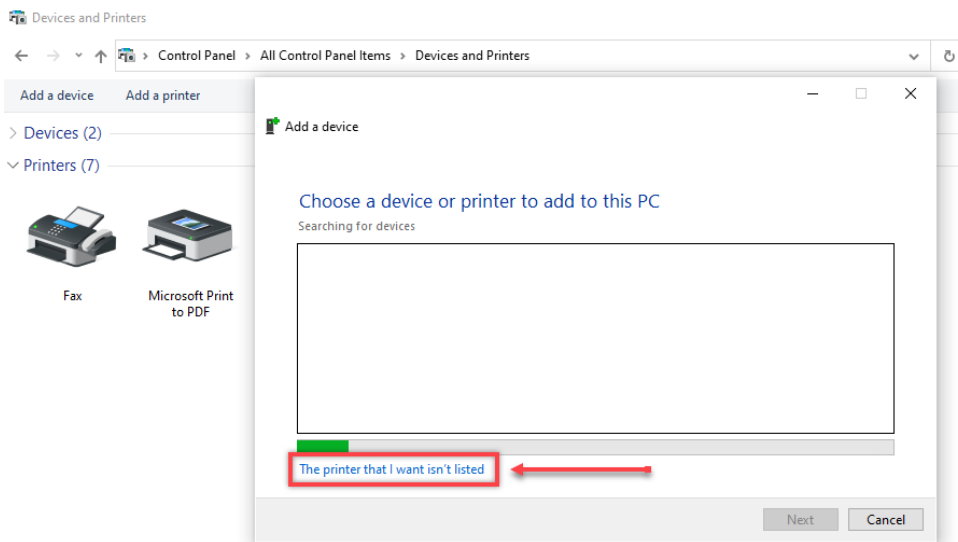
Open **Control Panel** and click **View devices and printers**



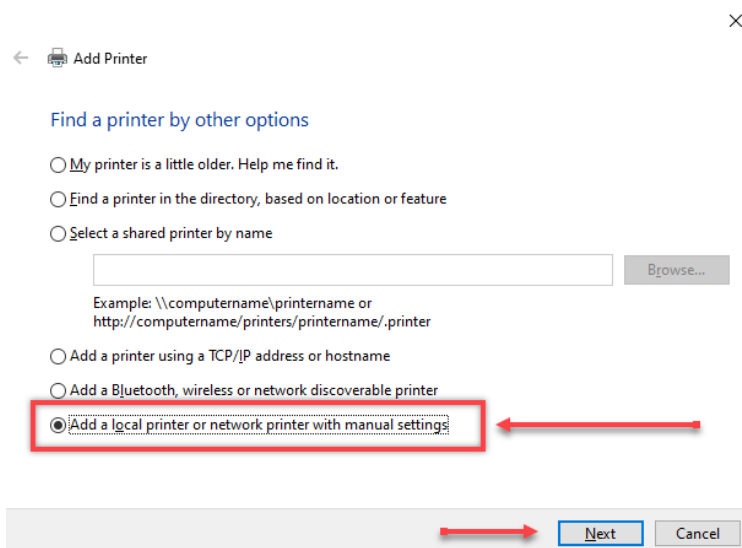
## Click **Add printer**



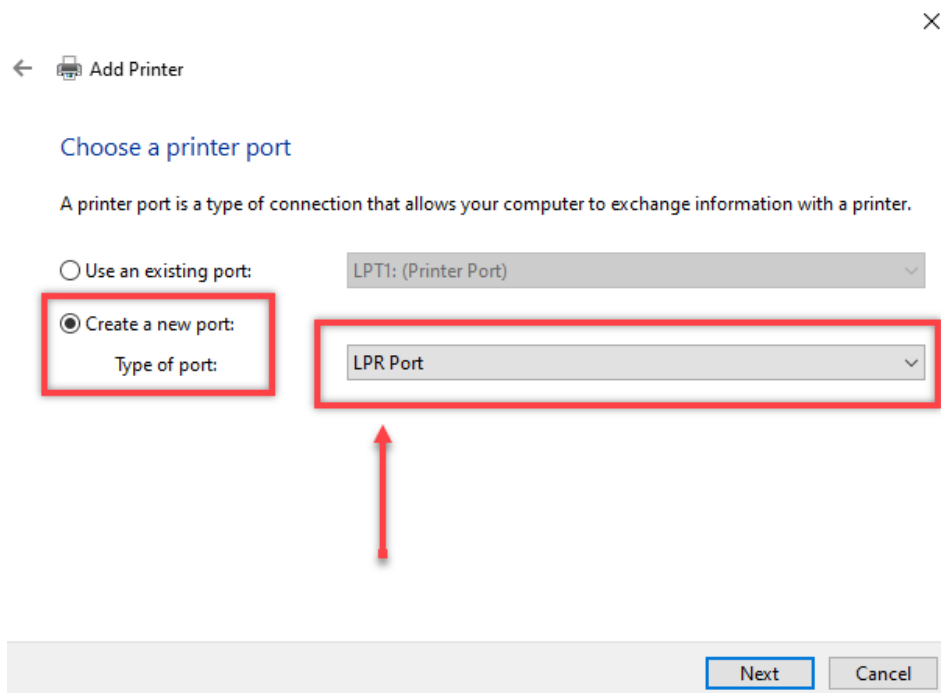
## Click **The printer that I want isn't listed**



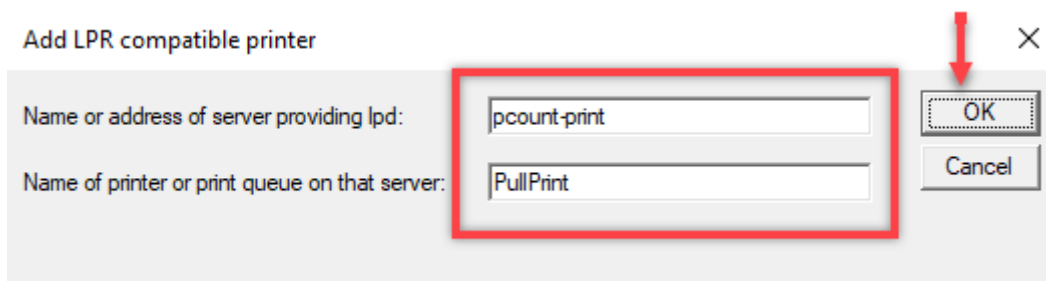
## Select **Add a local printer or network printer with manual settings** followed by **Next**



Select **Create a new port** and chose **LPR Port** followed by **Next**



In the first box enter the 'Server' and in the second box enter 'Name' fields appropriate to your location as found in the below table:

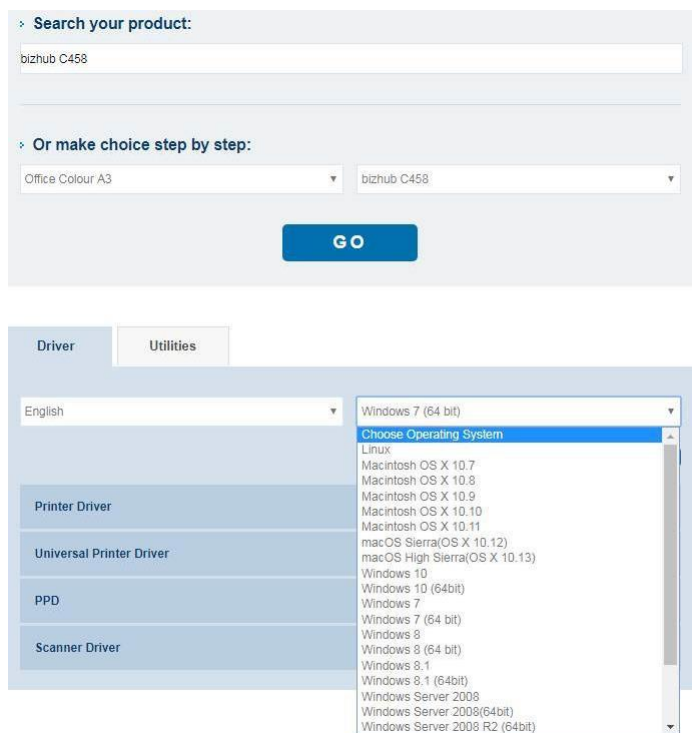


Location	Server	Name
Professional Services, FMS, HASS and MAS	PCOUNT-PRINT	PullPrint
Engineering and SNES	sage-print	SAGe-Pull
Urban Sciences Building	cs-print	USB Copiers

You may be asked for the location of a driver. If so, download and install it from <https://www.biz.konicaminolta.com/download/driver.html>

Search for and select **bizhub C458** then click **Go**

Then make sure you select the correct version of your operating system (likely to be Windows 10):



The screenshot shows a web interface for selecting a driver. The top section is titled "Search your product:" and contains a search box with "bizhub C458" entered. Below this is a section titled "Or make choice step by step:" with two dropdown menus: "Office Colour A3" and "bizhub C458". A blue "GO" button is positioned below these menus. The bottom section shows a dropdown menu for "Choose Operating System" with a list of operating systems including Linux, Macintosh OS X 10.7 through 10.11, macOS Sierra (OS X 10.12) and High Sierra (OS X 10.13), Windows 10, Windows 10 (64bit), Windows 7, Windows 7 (64 bit), Windows 8, Windows 8 (64 bit), Windows 8.1, Windows 8.1 (64bit), Windows Server 2008, Windows Server 2008(64bit), and Windows Server 2008 R2 (64bit).

You should now be connected to the printer. Finish by trying to print a test page